

1. CUT ME

LANDSCAPES WINTER WATERFALL



2. FOLD ME

HOW TO SHOOT... LANDSCAPES

Digital
Camera

3. KEEP ME!

WINTER WATERFALL

KIT CHECKLIST...

Wide-angle lens, tripod, polariser, ND filters

FOR YOUR FIRST SHOT, TRY...



TIPS FOR GETTING A GREAT SHOT...

- Use the circular polariser to reduce reflections on the water surface. Set your ISO as low as it will go.
- ND filters reduce the amount of light coming into the camera to enable a long exposure and control a bright sky.

Getty/Carlo Alberto Conti



There's a lot more rain in the winter, so the waterfall should look its spectacular best then.

ACTION BMX



HOW TO SHOOT... ACTION

Digital
Camera

BMX

KIT CHECKLIST...

24-70mm lens

FOR YOUR FIRST SHOT, TRY...



TIPS FOR GETTING A GREAT SHOT...

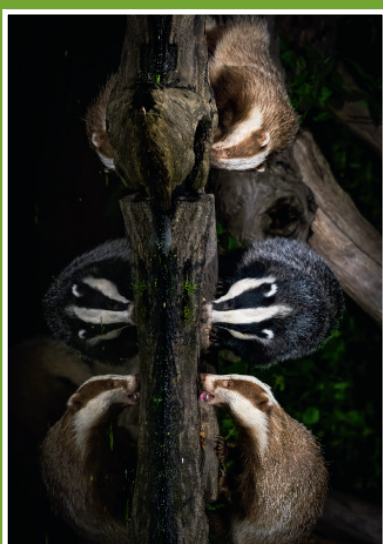
- Use Zone metering so that the camera exposes the scene for the sky. This will turn the BMX rider into a silhouette.
- To get a sufficiently fast shutter speed of over 1/1,000 sec, open up the aperture and use a fairly wide-angle lens.

Getty



To add some detail to the riders against a sunset, try using flash to balance the exposure.

WILDLIFE BADGERS



HOW TO SHOOT... WILDLIFE

Digital
Camera

BADGERS

Wildlife hides offer incredible opportunities to photograph these elusive native species.

- **Keep warm**
Wrap up and bring a hot drink, as many hides won't have heating. Temperatures will drop markedly after sunset.
- **A long lens is best**
The longer your zoom lens, the better. This image was shot with a 180-600mm lens at f/6.3 and ISO 3200.
- **Shutter speed**
If your hide offers subtle, continuous lighting (pictured) set the shutter speed to 1/200-1/250 sec to avoid shake.

Clive Ingram



It's tempting to fill the frame with the badger, but look for wider shots that give some context.



1. CUT ME

CAMERA KNOW-HOW CRASH COURSE



2. FOLD ME

HOW TO SHOOT... CAMERA KNOW-HOW

Digital
Camera

3. KEEP ME!

CRASH COURSE

Want to make the most of that new camera or just brush up on your technique and skills for the new year? Then tick these off...

- 1 Composition ☐
- 2 Aperture Priority ☐
- 3 Capture moving water ☐
- 4 Two focal lengths ☐
- 5 White Balance settings ☐
- 6 Different light sources ☐
- 7 Process a raw image ☐



Really get to know your camera by reading the manual and discovering powerful features.

URBAN NIGHT CITY



HOW TO SHOOT... URBAN

Digital
Camera

NIGHT CITY

Head for the big city, especially after it has rained, as this will enhance the reflections.

- **What to shoot**
Look for reflections of the neon signs and shopfronts. Use roads as leading lines. Capture the buzz of the city at night.
- **What to pack**
Instead of taking a couple of lenses and a tripod, avoid undue attention by just using an 18-50mm zoom instead.
- **Some settings**
At 18mm, there's plenty of depth of field at f/2.8, but if you need more, increase the ISO and stop down to f/5.6.

Getty



Start at dusk when the sky still has some colour, even if it's cloudy. Carry on into the night.

MACRO MODEL TRAINS



HOW TO SHOOT... MACRO

Digital
Camera

MODEL TRAINS

KIT CHECKLIST...

105mm macro lens, tripod

FOR YOUR FIRST SHOT, TRY...



TIPS FOR GETTING A GREAT SHOT...

- The choice of aperture depends on how creative you want the image to look and how much depth of field you need.
- Something like f/4 doesn't give much depth, so you need to be accurate with focusing. Use a single, small point.

Wendy Evans



Use the tracks to lead the eye into the photo, or create dynamic angles from top to bottom.

1. CUT ME

PORTRAITS COLOURED LIGHTS



2. FOLD ME

HOW TO SHOOT... PORTRAITS

Digital
Camera

COLOURED LIGHTS

KIT CHECKLIST...

85mm prime lens, configurable LED lights

FOR YOUR SHOTS, TRY...



Wendy Evans

TIPS FOR GETTING A GREAT SHOT...

- For striking results, use two lights: one set to red at 50 per cent brightness, and a key light set to blue at 100 per cent.
- When using coloured lights, set the camera's AWB to 5600K (Daylight), or it will attempt to correct the colours.



With modern LED lights, you can experiment with an entire range of colours. Go bold or stay subtle.

STILL-LIFE RUSTIC TABLE



HOW TO SHOOT... STILL-LIFE

Digital
Camera

RUSTIC TABLE

When it's raining outside, an indoor still-life project is perfect for honing your skills.

Assemble the props

All the props here are period-themed, with the colours matching the foodstuffs. You can buy the bread from a bakery.

Light it up

Window light on a cloudy day would be ideal. Don't be scared of using a fill light to ensure detail in the darker areas.

Lens choices

A lens between 35-50mm will include everything and avoid distortion. Try an f/8 aperture and focus on the first loaf.

Alamy



A rustic aesthetic means brown and amber tones, traditional foodstuffs and subdued lighting.

LANDSCAPES WATERY SUNRISE



HOW TO SHOOT... LANDSCAPES

Digital
Camera

WATERY SUNRISE

KIT CHECKLIST...

16-35mm wide-angle lens, tripod, filters

FOR YOUR FIRST SHOT, TRY...



TIPS FOR GETTING A GREAT SHOT...

- Contrast can be light and shadows, warm and cool tones, but it can also be texture. Use it to break the reflection.
- Imagine your photo on a weighing scale – which way would it tilt? Incorporate elements to balance the weighting.

Benjamin Dale



Finding a reflection can elevate your photo by doubling the visual elements and setting the mood.

3. KEEP ME!